



CONTRACT SEATING FABRICS

MCE offers our customers discounted pricing on a variety of fabric patterns and colors. We take pride in constructing your seating product and hand-covering it with the fabric of your choice.

Scroll down below to view our fabric cards.

Note: Featured fabrics are provided as a general guide and do not guarantee exact duplication of colors, textures or designs. To ensure the fabric selection meets your expectations, please request a sample from your Account Representative.





CONTRACT UPHOLSTERY FABRICS

Origin, Ego, Nestle

ORIGIN



010 Alloy



020 Amethyst



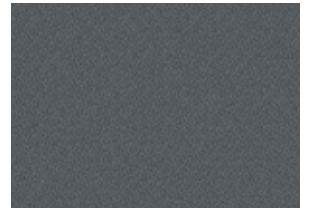
060 Clay



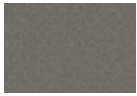
070 Dune



110 Garnet



130 Iron



030 Arundel



040 Basalt



050 Caraway



080 Euro



090 Eve



100 Fez



120 Indigo



150 Marina



160 Poppy

EGO



01E Dove



04E Ginger



06E Midnight



09E Twig



02E Foil



03E Galena



05E Jade

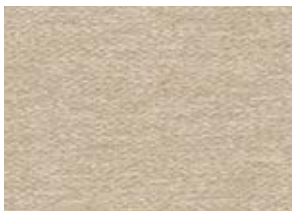


07E Onyx



08E Spa

NESTLE



01N Almond



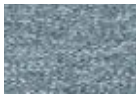
04N Grove



06N Mineral



09N Pepper



02N Cascade



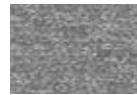
03N Eve



05N Mesa



07N Mink



08N Nickel



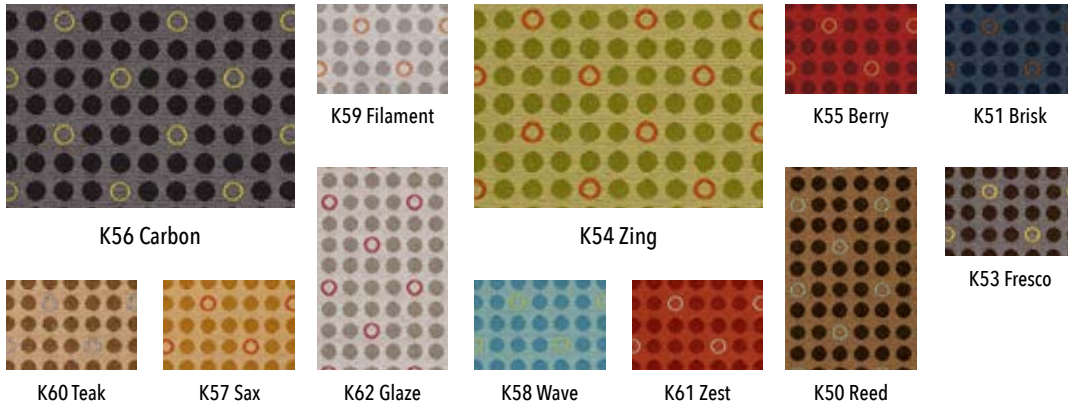
CONTRACT UPHOLSTERY FABRICS

Fuse, Knack

FUSE



KNACK



TECHNICAL INFORMATION

| Width – Pattern | Fiber Content & Backing | Finish | Abrasion(D.R.) | Light-Fastness | Approx. Repeats |
|----------------------------|---|------------------------|----------------|----------------------|------------------|
| 58" ORIGIN ☑️☑️☑️☑️☑️☑️ | 100% Post Consumer Recycled Polyester Acrylic Backing | Soil & Stain Resistant | 282,000 | (Cl. 4.5) 40 Hrs. | |
| 54" EGO ☑️☑️☑️☑️☑️☑️ | 85% Polyester, 15% Viscose Rayon Acrylic Backing | Soil & Stain Resistant | 250,000 | (Cl. 4.5) 40 Hrs. | |
| 54" NESTLE ☑️☑️☑️☑️☑️☑️ | 67% Polyester, 33% Post Consumer Recycled Polyester Acrylic Backing | Soil & Stain Resistant | 200,000 | (Cl. 4.5) 40 Hrs. | |
| 54" FUSE ☑️☑️☑️☑️☑️☑️ | 65% Post Industrial Recycled Polyester, 35% Post Consumer Recycled Polyester Latex Backing | Soil & Stain Resistant | 100,000 | (Cl. 4.5) 40 Hrs. | |
| 54" KNACK ☑️☑️☑️☑️☑️☑️ | 100% Post Consumer Recycled Polyester Acrylic Backing | Soil & Stain Resistant | 100,000 | (Cl. 5) 40 Hrs. | 1 5/8"L, 1 3/4"W |

*ACT® Registered Certification Marks

GREENGUARD Gold Certified. CA Section 01350 compliant. Eligible for CHPS Low-Emitting Material Credits.





CONTRACT UPHOLSTERY FABRICS

Classic (Vinyl), Glaze (Vinyl)

CLASSIC (VINYL)



C02 Saddle



C03 Black



C30 Marshmallow



C15 Burgundy



C05 Sage



C16 Admiral



C27 Buff



C13 Granite



C19 Taupe



C04 Claret



C26 Papyrus

GLAZE (VINYL)



G10 Amber



G11 Brunette



G23 Warm White



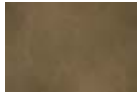
G21 Regatta



G19 Shiraz



G15 Honey



G20 Tannery



G12 Cedar



G16 Licorice



G22 Landscape



G13 Flame



CONTRACT UPHOLSTERY FABRICS

TECHNICAL INFORMATION

| Pattern | Content | Weight/Width | Abrasion | Colorfastness | Cold Rack | Ultra Violet | Mildew Resistance | Flame Resistance |
|---------|---|------------------------|----------------------------|--|--------------------------------------|------------------------|---|------------------|
| | | | ASTM 4197 (Double Rubs) | Fed. Std. No. 191A Method 5874/CFFA-6 | Resistance G26-96 Method C/CFFA-2 | ATM G21-96 CFFA-120 | | |
| Classic | 100% Vinyl Backing: 100% Brushed Polyester Knit | 29 oz./yd. 54" wide | 500,000 Double Rubs | - 20° F | Pass | Pass | Cal. 117 Section E BIFMA Class 1 or A UFAC Class1 • MVSS 302 NFPA - 260 ASTM E84 Class 1 or A Boston BFD 1X-1 Port Authority N.Y./N.J. IMO A.652 (16) 8.2 IMO A.652 (16) 8.3 | |
| Glaze | 100% Phthalate Free PVC Vinyl Backing: Polyester/Cotton | 36 oz./yd. 54" wide | 100,000 Double Rubs | - 20° F | | | Cal. 117 Section E BIFMA Class 1 or A UFAC Class1 MVSS 302 • NFPA - 260 ASTM E84 Class 1 or A IMO A.652 (16) 8.2 IMO A.652 (16) 8.3 | |

| Cleaning Method | STAINING AGENT | | | | | | | |
|-----------------|----------------|----------|---------|-------|-----------------|----------|-------------|-----------|
| | Dirt | Penmarks | Sharpie | Paint | Ketchup Mustard | Lipstick | Nail Polish | Blue Jean |
| Method 1 | X | X | | | | | | X |
| Method 2 | X | X | | | X | X | | X |
| Method 3 | | X | X | X | X | X | X | X |

Method One: For most common stains and spills, use mild soap and water
 Method Two: If Method One doesn't work, use the following household items; FANTASTIK • 409 • MR. CLEAN
 Method Three: For tougher stains as sharpie, paint and lipstick, use a 70% isopropyl alcohol wipe.

Flame Retardancy:

- California 117, Section E
- NFPA 260 - 1989
- UFAC Class 1

Cleaning Instructions: Primary

WS - For water based stains, use mild detergent foam or upholstery shampoo.
 For oil based stains, spot clean with a dry cleaning solvent, being sure to test area first. Cleaning by a professional furniture service is recommended.

Additional cleaning information can be found at www.cryptonfabric.com

Crypton® is protected by ten global patents
 U.S. PATENTS 6,541,138, 6,251,210, 6,207,250, 6,165,920, 6,024,823,
 5,747,392, 5,565,265 and 6,584,491 - OTHER U.S. AND INTERNATIONAL PATENTS PENDING.

© 2010 Crypton, Inc. Crypton and the red planet logo are registered trademark of Crypton, Inc.

Cleaning Instructions: Classic, Glaze

Prompt cleaning is always recommended. Ordinary dirt and stains can be removed with mild soap and water. Rinse the cleaned area with clean water and dry with a lint-free cloth. Classic & Glaze will resist, without serious discoloration, the repeated actions of normal dilutions of non-abrasive chlorine or ammonia-based cleaners.

Resilience^{SR} ENDURING PROTECTION Resilience^{SR} represents the latest technology in Faux Leather and Vinyl Protection enhancing performance where it is needed the most.

STAIN RESISTANCE: With proper care, materials treated with Resilience^{SR} can be easily cleaned and will guard against stains maintaining the desired surface appearance for years to come.

ANTI-MICROBIAL & ANTI-BACTERIAL PROTECTION: Products treated with Resilience^{SR} are engineered to inhibit bacterial growth, as well as fungus, mold and mildew spores, resulting in a more hygienic environment.

ABRASION RESISTANCE: Resilience^{SR} provides additional wear properties and surface durability to any Vinyl or Faux Leather, thereby increasing the life of the material.

Resilience^{SR} is not visible, and does not affect the hand of the material. Resilience^{SR} is engineered to last, even after repeated cleaning and wear. Specify Resilience^{SR} for the most demanding healthcare and hospitality applications.



CONTRACT UPHOLSTERY FABRICS

Quattro, Fedora, Cosmopolitan

QUATTRO



QU5 Midnight Blue



QU9 Spring Green



QU6 Deep Crimson



QU8 Wheat



QU7 Laguna



QU1 Khaki



QU2 Granite



QU4 Honeycomb

FEDORA



01F Bitumen



04F Dew



06F Light Grey



09F Ruby



02F Charcoal



03F Dapper



05F Indigo



07F Opa



08F Pewter

COSMOPOLITAN



D00 Denim



D02 Lemongrass



D05 Horizon



D08 Ecrú



D10 Granite



D13 Shadow



D01 Marigold



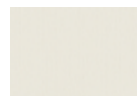
D03 Saffron



D04 Tangerine



D06 Opal



D07 Chalk



D09 Mist



D12 Shiitake



CONTRACT UPHOLSTERY FABRICS

Jive, Variant 10, Theory 10

JIVE



01J Aegean



04J Bordeaux



07J Midnight



09J Smoke



02J Alabaster



03J Aubergine



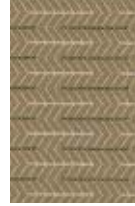
05J Emerald



06J Mango

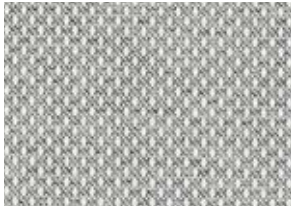


08J Pewter



10J Stone

VARIANT 10



01V Aluminum



04V Biscuit



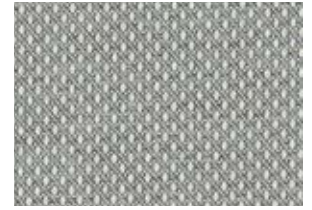
06V Chocolate



10V Ink



12V Mustard



09V Flint



02V Aubergine



03V Barn Red



05V Carbon



07V Cocoa



08V Creme



11V Jungle



13V Palm



14V Prussian

THEORY 10



01T Alabaster



05T Espresso



03T Cafe Au Lait



10T Onyx



11T Port



02T Aubergine



04T Charcoal



06T Grove



07T Indigo



08T Lipstick



12T Slate



09T Navy



Technical Information

Contract Upholstery Fabrics

| Pattern | Content & Backing | Certifications | Weight/Linear Yd. | Pattern Repeat | Finish | Abrasion Resistance | Light-Fastness | Flammability | Cleaning Code |
|------------------------------------|--|-----------------|-----------------------------|---------------------------|---|-------------------------------------|----------------|--|---------------|
| JIVE <i>Directional</i> | 100% Polyester Backing: Acrylic | | 12.43 oz./ln yd 57" wide | H - 1.2 in V - 0.4 in | Stain Repellent - PFOA & PFOS Free | 82,000 Double Rubs | 40 Hours | Passes Cal TB 117-2013; NFPA 260/UFAC Class 1 | S |
| VARIANT 10 <i>Directional</i> | 75% Post-Consumer Recycled Polyester/25% Polyester Backing: Latex | | 14.5 oz./ln yd 54" wide | H - 0.17 in V - 0.2in | Stain Repellent - | 140,000 Double Rubs | 40 Hours | Passes Cal TB 117-2013; NFPA 260/UFAC Class 1 | WS |
| THEORY 10 <i>Directional</i> | 75% Post-Consumer Recycled Polyester/25% Polyester Backing: Latex | | 14.5 oz./ln yd 54" wide | H - 0.17 in V - 0.39in | Stain Repellent - | 150,000 Double Rubs | 40 Hours | Passes Cal TB 117-2013; NFPA 260/UFAC Class 1 ASTM E84 Class 1 or A (Unadhered) | WS |
| QUATTRO <i>Directional</i> | 100% Polyester Backing: Acrylic | GREENGUARD GOLD | 13.06 oz | Non-Matching | Stain Repellent - | 237,000 [^] Double Rubs | 40 Hours | Passes Cal TB 117-2013; NFPA 260/UFAC Class 1; ASTM E84 (Unadhered) IMO A.652 (16) 8.2 | S |
| FEDORA <i>Directional</i> | 100% Polyester Backing: Polyester | | 17.2 oz./ln yd 54" wide | | Stain Repellent - PFAS Free | 100,000 Double Rubs | 40 Hours | Passes Cal TB 117-2013; NFPA 260/UFAC Class 1 ASTM E84 Class 1 or A (Unadhered) | WS |
| COSMOPOLITAN <i>Directional</i> | 88% Polyester, 12% Nylon Backing: Polyester | GREENGUARD GOLD | 19.28 oz | None | Crypton [®] with Antimicrobial Silver Ion Technology | 100,000 Double Rubs | 40 Hours | Cal 117-2013 NFPA 260/UFAC Class 1 | C, BC |



REDUCED ENVIRONMENTAL IMPACT

This product is GREENGUARD Gold Certified for low chemical and particle emissions to UL standard UL 2818 and may contribute to LEED certification. For complete information visit UL.com/gg.



Eco-System[®]

Sustainable. Attainable at Mayer Fabrics.

The Eco-System icon indicates 100% recycled content.

WS: Water/Solvent Cleaner - Spot clean with a mild solvent, an upholstery shampoo, or the foam from a mild detergent. When using a solvent or dry cleaning product, follow instructions carefully and clean only in a well-ventilated room. Avoid any product that contains carbon tetrachloride or other toxic materials. With either method, pretest a small area before proceeding. Always rinse promptly with clean water.

Quattro

S: Solvent — Spot clean, using a mild water-free solvent or dry cleaning product. Clean only in a well-ventilated room avoid any product that contains carbon tetrachloride or other toxic materials. Pretest a small area before proceeding. Always rinse promptly with clean water.

Cosmopolitan

C: Crypton Cleaning – Crypton fabrics are available in various fiber types, and all Crypton fabrics can be cleaned with soap and water. For the best cleaning solution, use CRYPTON UPHOLSTERY CLEANER, available from Mayer Fabrics.

BC: Bleach Cleanable – 1 part bleach, 9 parts water =10% bleach, 90% water solution. **Do not clean/disinfect fabric for longer than 10 minutes using the 10% bleach solution. Always rinse promptly with clean water after applying the bleach solution. Failure to do so will void any and all warranties.**

Prompt cleaning is always recommended.

For detailed care and cleaning information or each pattern, please refer to the MCE website or contact customer service.

ADDITIONAL INFORMATION

Cal TB 133: All patterns may comply with California Technical Bulletin 133 when combined with appropriate components.

^ Abrasion: Multiple factors affect fabric durability and appearance retention, including end-user application and proper maintenance. Wyzenbeek results above 100,000 double rubs have not been shown to be a reliable indicator of increased fabric lifespan.

Custom Capabilities: All patterns can be custom colored. Minimum yardage applies.

Memo Samples: Please keep this card intact. Individual memo samples are available. Please contact MCE or refer to the MCE website.

Color Matching: Mayer Fabrics always attempts to ship a satisfactory commercial match. Because of industry standard dye lot variation, colors may not match exactly.

Specifications: Specifications are correct at the time of printing. Additional specifications are available on our website.

For information or assistance with products or services, call us at 410.540.5400 or refer to our website, www.mce.md.gov.



These fabrics meet or exceed these ACT performance guidelines *Certification Markedown by ACT*

Quattro



Water and Stain Repellent Finish

Cosmopolitan



CRYPTON[®]

Formulated with Crypton 2.0 for better performance, bio-based content and a softer, more pliable hand.

Quattro



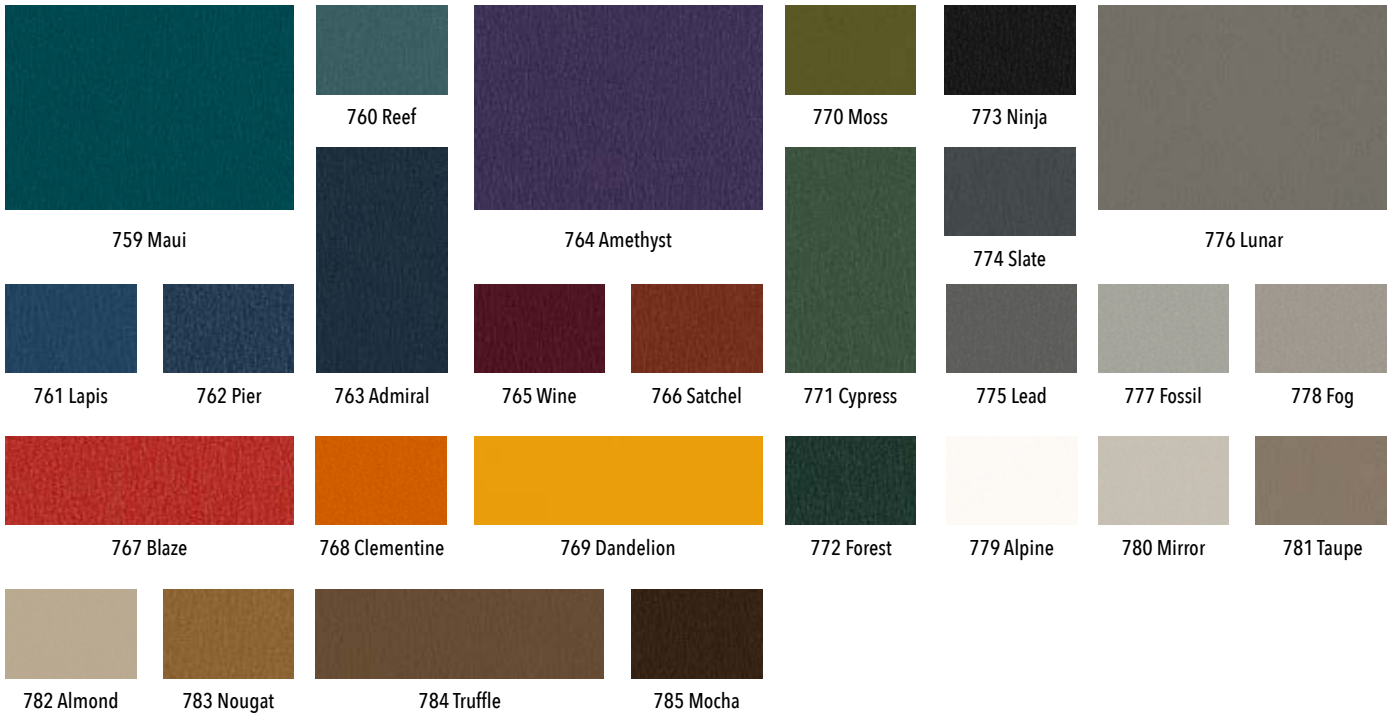
[®] This 100% polyester fabric is included in the Underwriter's Laboratory Fall Recognition Program. Additional testing of this U.L. recognized component not required on approved panels from participating manufacturers.



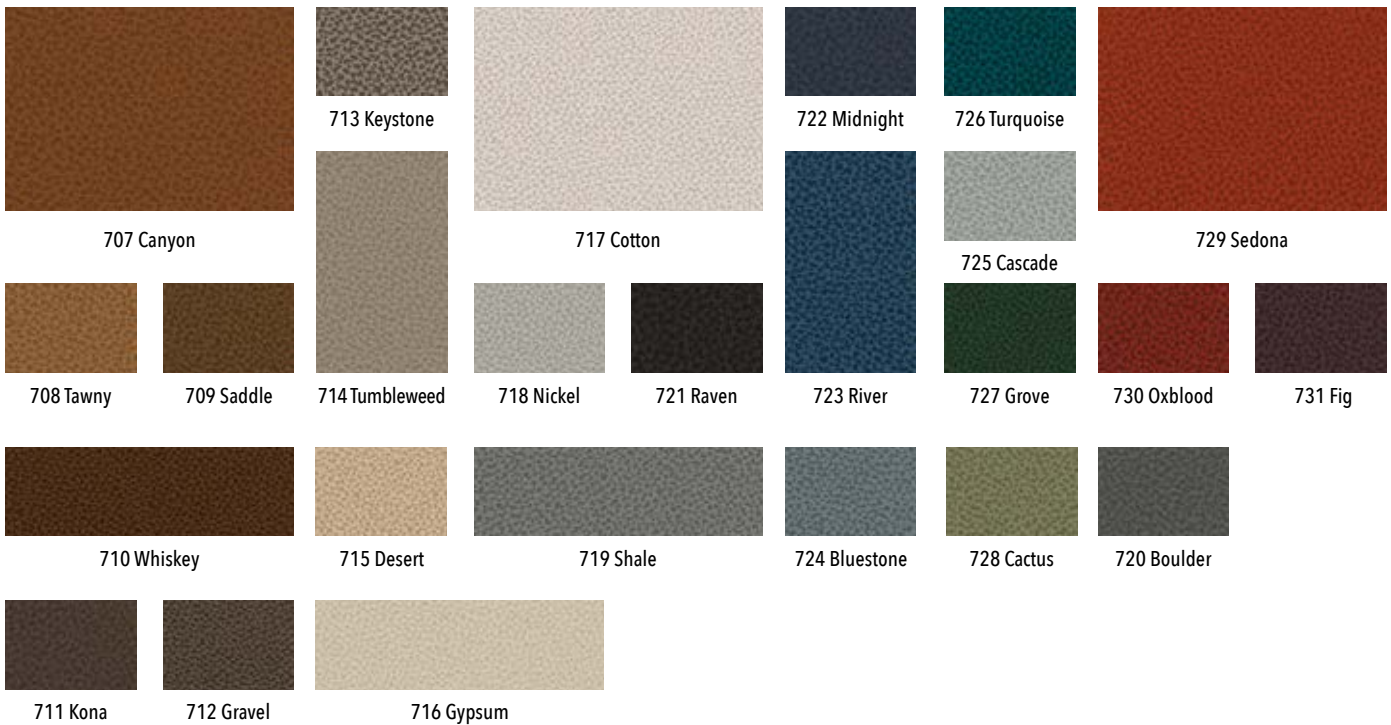
CONTRACT UPHOLSTERY FABRICS

Palomino (Vinyl), Jackpot (Vinyl)

JACKPOT (VINYL)



PALOMINO (VINYL)





Technical Information

Contract Upholstery Fabrics

JACKPOT

Fabric Specifications

| | |
|-------------------|---|
| Face | 100% Vinyl |
| Backing | 100% Polyester |
| Bleach Cleanable | Yes Ratio: 90% Water / 10% Bleach Solution |
| Weight | 30.0 oz. per linear yd |
| Thickness | 0.80 mm |
| Width | 54" |
| Roll Size | 30 yards |
| Directional | No |
| Railroaded | No |
| Country of Origin | India |

Additional Attributes

| | |
|---|-----|
| PFAS Free | Yes |
| Prop 65 Compliant | Yes |
| 16P Phthalate Free | Yes |
| Free of Added FR Chemicals / CAL AB2998 Compliant | Yes |
| Antibacterial | Yes |
| Antimicrobial | Yes |
| BPA Free | Yes |
| Free of Conflict Minerals | Yes |
| Formaldehyde Free | Yes |
| Free of Heavy Metals | Yes |
| Lead Free | Yes |
| Sulfide Stain Resistant | Yes |
| TRIS Free | Yes |

Performance Characteristics

| | |
|-----------------------------------|------------------------------------|
| Abrasion Resistance ASTM D4157 | 100,000 double rubs* |
| Tensile Strength ASTM D751 | Warp: 79.1 lbs. Fill: 70.5 lbs. |
| Tear Strength ASTM D2261-07 | Warp: 4.2 lbs. Fill: 8.3 lbs. |
| Seam Slippage ASTM D751-06 | Warp: 46.3 lbs. Fill: 32.6 lbs. |
| Colorfastness to Crocking AATCC 8 | Dry: 4.5 Wet: 5.0 |
| UV Resistance AATCC 16-3 | 200 hours |
| Adhesion | Warp: 6.9 lbs. Fill: 5.0 lbs. |
| Cold Crack CFFA-6 | -10° F |
| Flex ASTM D2097 | 25,000 cycles |
| Flammability** | |
| CAL TB 117-2013 | Passes |
| NFPA 260 | Class 1 |

Although we try hard to make sure colors on our site are accurate, actual colors may vary. Please order samples prior to making a purchase.

Final determination of the suitability of this product for an application rests with the user.

* Abrasion test results exceeding ACT Performance Guidelines are not an indicator of product lifespan. Multiple factors affect fabric durability and appearance retention.

** This term and any corresponding data refer to the typical performance in the specific tests indicated and should not be construed to imply the behavior of this or any other material under actual fire conditions.

PALOMINO

Fabric Specifications

| | |
|-------------------|---|
| Face | 100% Vinyl |
| Backing | 100% Polyester |
| Finish/Treatment | Resilience™ |
| Bleach Cleanable | Yes Ratio: 90% Water / 10% Bleach Solution |
| Weight | 32.0 oz. per linear yd |
| Thickness | 1.30 mm |
| Width | 54" |
| Roll Size | 30 yards |
| Directional | Yes |
| Railroaded | No |
| Country of Origin | Turkey |

Additional Attributes

| | |
|---|-----|
| PFAS Free | Yes |
| CFFA-HC-201 Compliant | Yes |
| Prop 65 Compliant | Yes |
| 16P Phthalate Free | Yes |
| Free of Added FR Chemicals / CAL AB2998 Compliant | Yes |
| Antibacterial | Yes |
| Antimicrobial | Yes |
| BPA Free | Yes |
| Free of Conflict Minerals | Yes |
| Formaldehyde Free | Yes |
| Free of Heavy Metals | Yes |
| Lead Free | Yes |
| Sulfide Stain Resistant | Yes |
| TRIS Free | Yes |

Performance Characteristics

| | |
|-----------------------------------|--------------------------------------|
| Abrasion Resistance ASTM D4157 | 250,000 double rubs* |
| Tensile Strength ASTM D751-06 | Warp: 175.0 lbs. Fill: 163.0 lbs. |
| Tear Strength ASTM D2261 | Warp: 11.2 lbs. Fill: 18.9 lbs. |
| Seam Slippage ASTM D751 | Warp: 60.7 lbs. Fill: 79.1 lbs. |
| Colorfastness to Crocking AATCC 8 | Dry: 5.0 Wet: 5.0 |
| UV Resistance AATCC 16 | 300 hours |
| Adhesion ASTM D751-06 | Warp: 7.4 lbs. Fill: 6.1 lbs. |
| Cold Crack CFFA-6 | -20° F |
| Flex ASTM D2097 | 25,000 cycles |
| Flammability** | |
| CAL TB 117-2013 | Passes |
| NFPA 260 | Class 1 |

Although we try hard to make sure colors on our site are accurate, actual colors may vary. Please order samples prior to making a purchase.

Final determination of the suitability of this product for an application rests with the user.

* Abrasion test results exceeding ACT Performance Guidelines are not an indicator of product lifespan. Multiple factors affect fabric durability and appearance retention.

** This term and any corresponding data refer to the typical performance in the specific tests indicated and should not be construed to imply the behavior of this or any other material under actual fire conditions.

Meets or exceed all ACT® Standards
High Performance Vinyl
Bleach Cleanable
FR Free – Compliant with CAL AB 2998
PFAS Free
CFFA-HC-201 Compliant



* ACT® Registered Certification Marks